



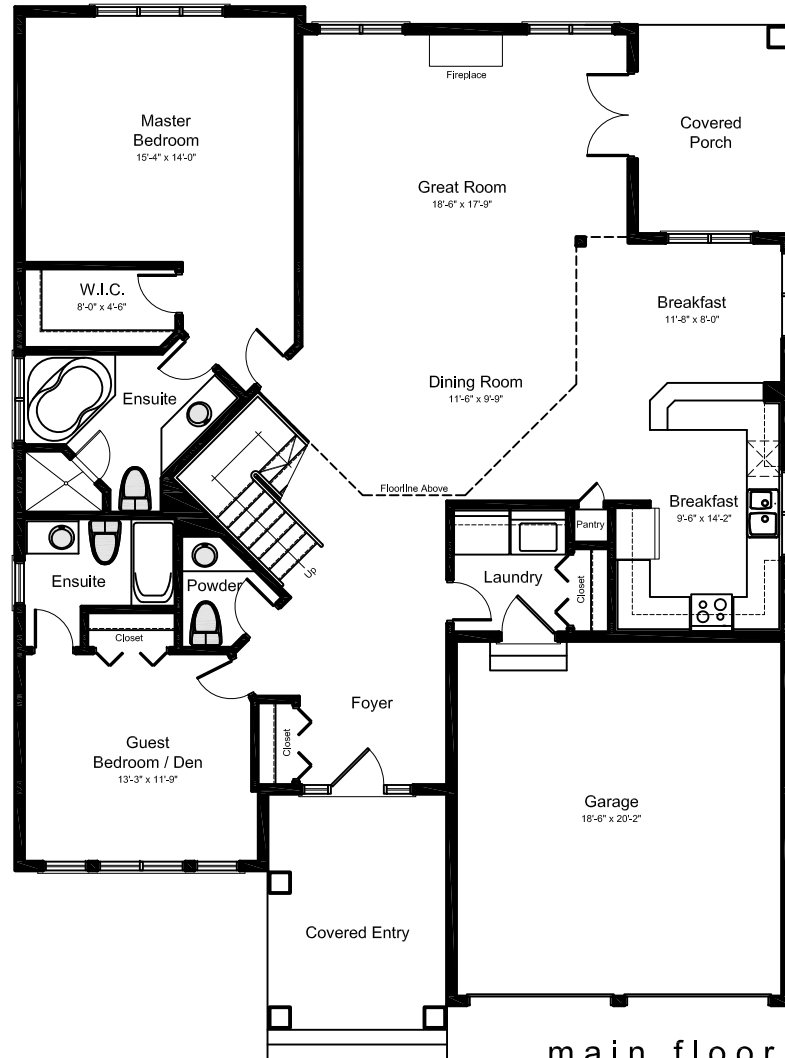
front elevation

'THE McPHEE'

# Port McNicoll

Residential Architecture





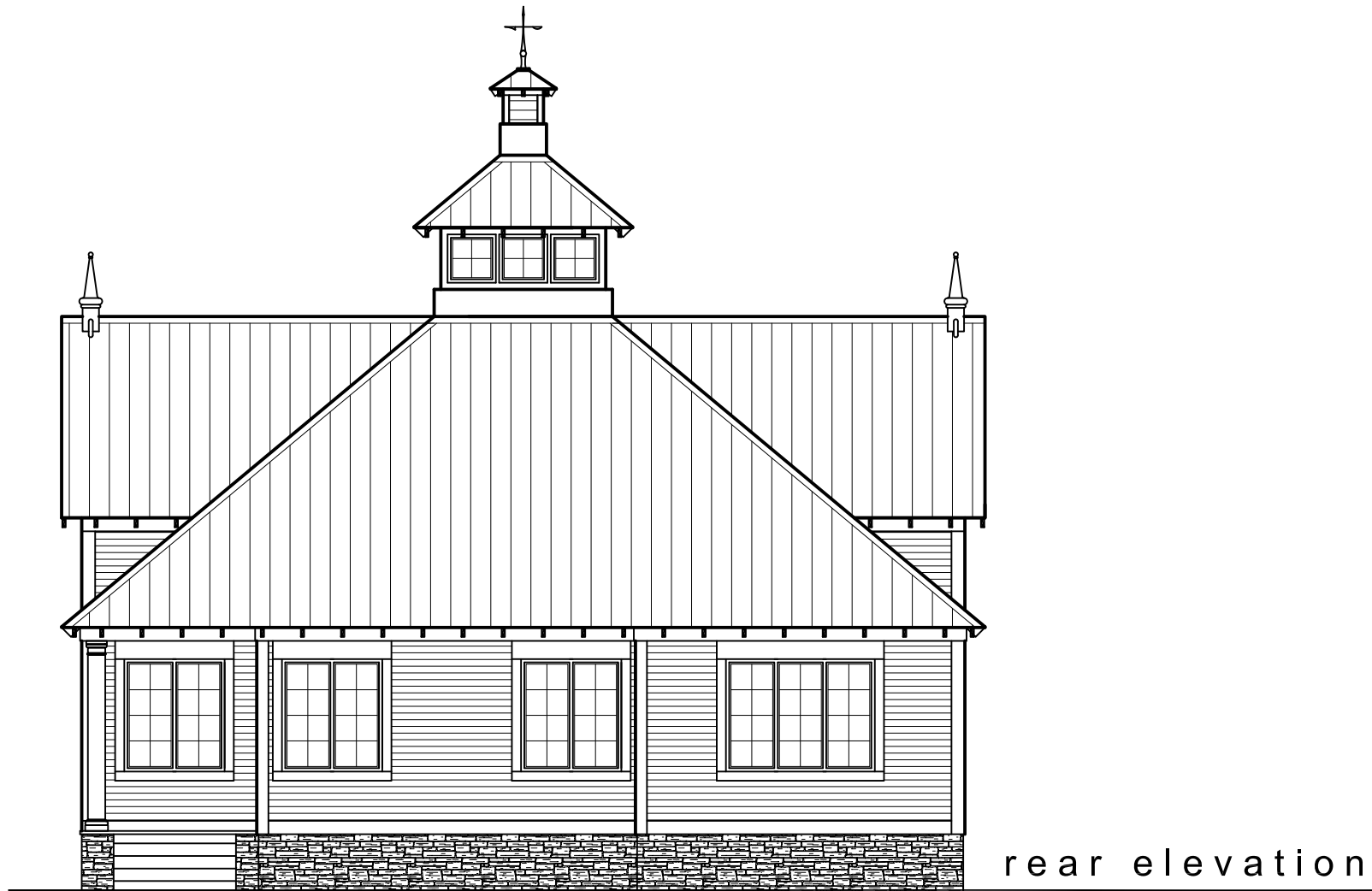
main floor plan = ± 1,600 sft

'THE McPHEE'

# Port McNicoll

Residential Architecture





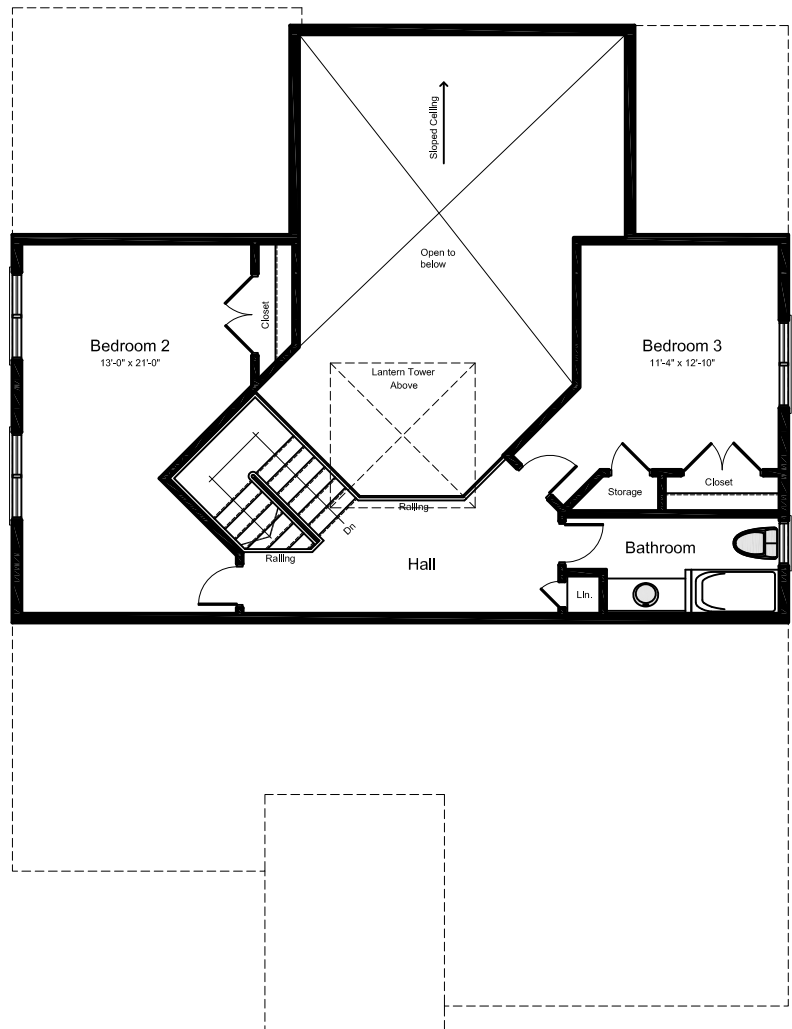
rear elevation

'THE McPHEE'

# Port McNicoll

Residential Architecture





second floor plan = ± 607 sft

'THE McPHEE'

# Port McNicoll

Residential Architecture

