



front elevation

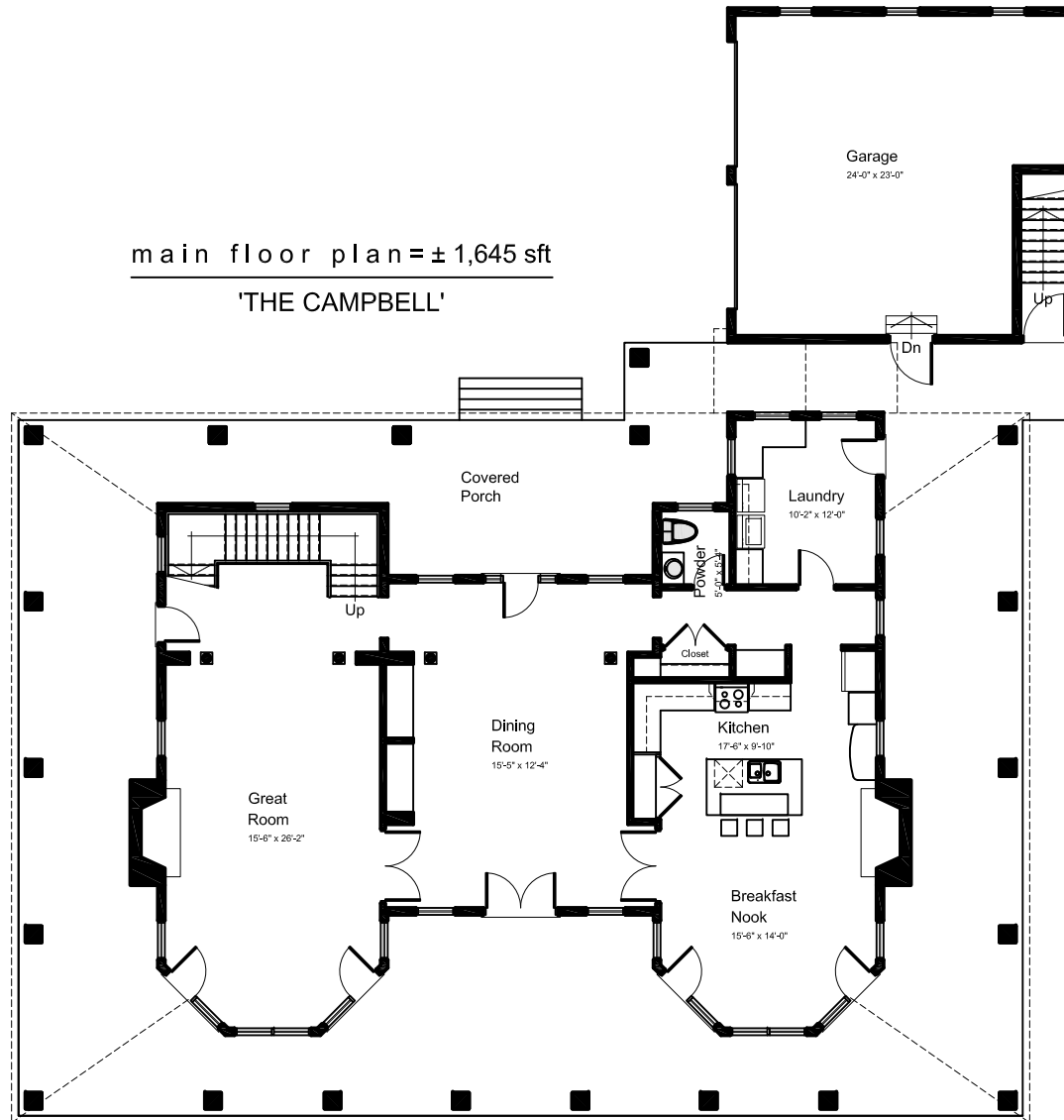
'THE CAMPBELL'

Port McNicoll

Residential Architecture



main floor plan = ±1,645 sft
'THE CAMPBELL'



Port McNicoll

Residential Architecture





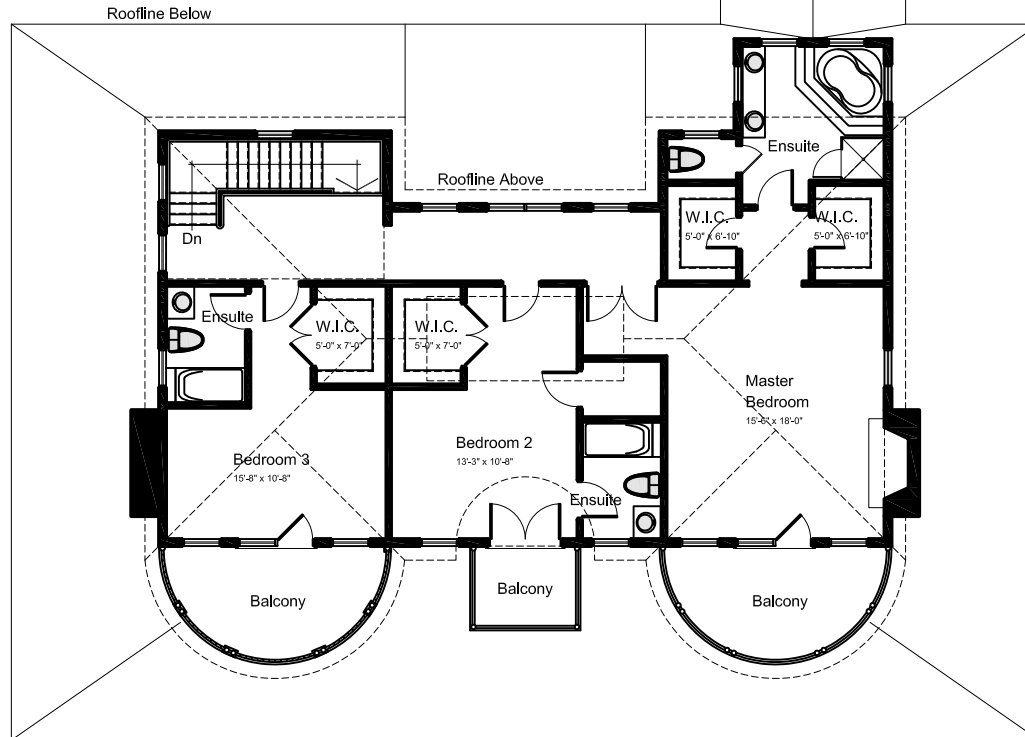
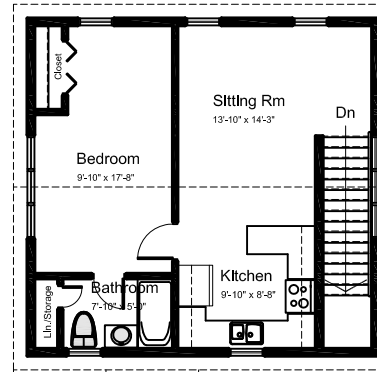
rear elevation
'THE CAMPBELL'

Port McNicoll

Residential Architecture



second floor plan = ± 1,350 sft
loft floor plan = ± 492 sft
'THE CAMPBELL'



Port McNicoll

Residential Architecture

