



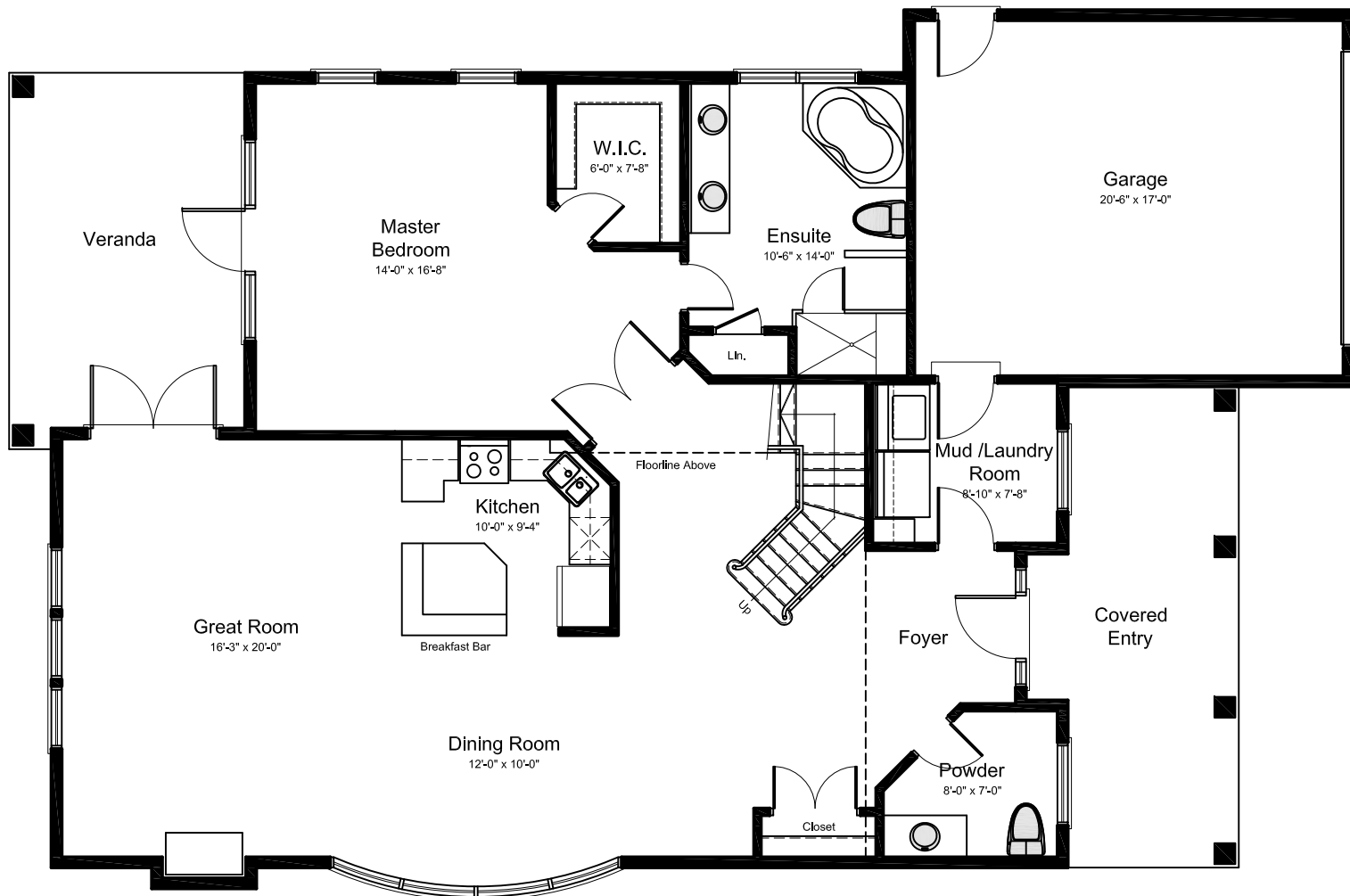
front elevation

'THE ANDERSON'

# Port McNicoll

Residential Architecture





main floor plan = ± 1,401 sft

'THE ANDERSON'

**Port McNicoll**

Residential Architecture





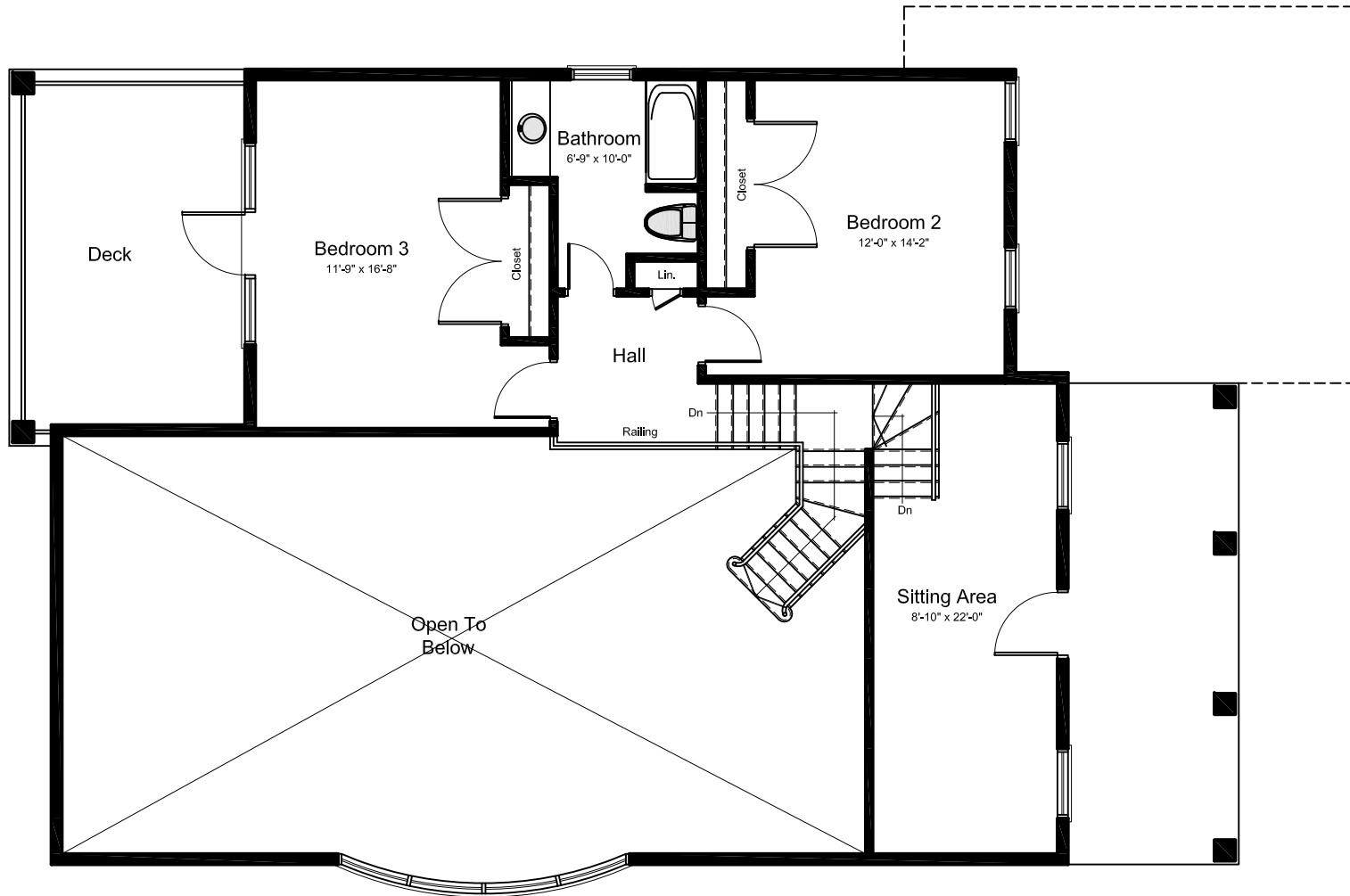
rear elevation

'THE ANDERSON'

# Port McNicoll

Residential Architecture





second floor plan = ± 730 sft

'THE ANDERSON'

**Port McNicoll**

Residential Architecture

